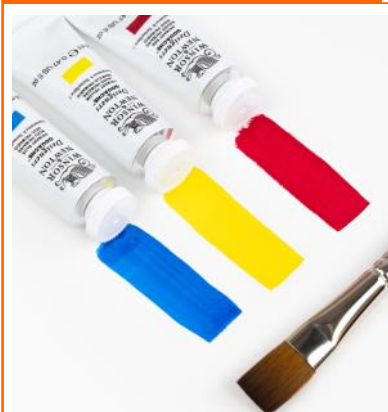


# FALL FLYER 2024

**\*Be kind to the environment;**  
[sign up at www.deltaart.ca](http://www.deltaart.ca) to receive the e-newsletter flyers

## Winsor & Newton Designers Gouache



Winsor & Newton Designers Gouache is celebrated for its exceptional brilliance, opacity, and strong tinting power. This finely ground, water-based paint is ideal for illustrations created with pen, brush, or airbrush. All Designers Gouache colors seamlessly blend with Winsor & Newton Artists' and Cotman watercolors. For fine art painting, it is best to use watercolor papers. However, for design and illustration projects intended for electronic scanning and reproduction, illustration board or Hot Press watercolor paper is recommended to achieve a flat finish that reproduces beautifully.

[11WIN0605...](#)  
**Save 45% Off Retail**

## Canson Mi-Teintes Velvet (Coming Soon)



### Mi-Teintes® Velvet paper's features

Canson® Mi-Teintes® Velvet is specially designed for pastel artists looking for a high-quality paper. This thick 430 gsm paper allows easy colour application, ensuring vast creative freedom. Its velvety surface, perfect for pastels, enhances pigment adherence and withstands wet techniques, making it ideal for precise, detailed work. This paper is excellent for easy and reliable creation.

### The benefits of Mi-Teintes® Velvet paper

Mi-Teintes® Velvet paper offers many benefits for pastel artists. An ideal paper for pastels, it ensures a smooth application and allows unlimited overlaying of colours, giving life to vivid, exquisite works. The paper quality eliminates the need for a fixative, making it easier for art-

ists to work and preserving the purity and luminosity of the colours applied. Exceptional pigment adhesion for brilliant, long-lasting results, allowing works to retain their intensity over time. The use of wet techniques opens up new creative possibilities, inviting artists to explore without constraints. A choice of 14 colours, offering a variety of backgrounds to suit every artist's vision.....

Pads [56CANC503508....](#) And Sheets [57CANC503512....](#) **Save 40% Off Retail**



### Origin Acrylic is a

Eco-designed high-viscosity acrylic available in 48 colours. A high-quality formula with a matte finish and a rich, dense, nervous texture that allows artists to retain the marks of their brushes and knives. Malleable for thick work and impastos, it also lends itself easily to brush application.

High pigment concentration for intense colour and excellent lightfastness. A single-pigment colour that guarantees a particularly luminous, deep shade that retains its brilliance and purity when mixed.

Eco-designed range formulated from 100% recycled binder, reducing the carbon footprint by 80% compared to a non-recycled binder. Made in France from 96% European raw materials. Paint packaged in an eco-tube made from FSC®-certified PE paper, reducing the amount of plastic used by 31%\*. \*compared to a 60ml plastic tube.

[12PEB....](#) **Save 40% Off Retail**

## Liquitex Bio Acrylic

The resin base of a typical pro acrylic paint is made from 100% petrol-derived ingredients sourced from fossil fuels and other non-renewable substances. For Liquitex Bio-Based we've halved this, replacing ingredients with ones from renewable, biological sources. These come from living or once-living organisms like corn, soy, sugarcane and algae which can be regrown or replenished relatively quickly through natural or farming processes.

As well as the resin, every other ingredient that has a bio-based alternative has been replaced and we've avoided any components or pigments derived from animals.

As more bio-based ingredients become available, we'll incorporate them.



[12LI04360 ....](#)

**Save 50% Off 72 ml. Bottles**

## Yasutomo Fusion Brushes



With a classical Asian appearance but Western performance capabilities, Yasutomo Fusion brushes combine features of Eastern and Western styles to give you a versatile painting tool.

Taklon fiber bristles hold a fine point for detailed strokes.

Brush tips are responsive and springy for a controlled painting experience, perfect for watercolor and lettering.

Dark, synthetic handles are easy to clean and won't crack.

Hang brushes by the end loop to dry.

[24YASF...](#)

<a href="#">Item</a>	<a href="#">Type</a>	<a href="#">Retail</a>	<a href="#">Sale</a>
24YASFS025	Flat 1/4"	\$ 7.50	<b>\$ 4.50</b>
24YASFS05	Flat 1/2"	\$ 8.99	<b>\$ 5.20</b>
24YASFA075	Flat 3/4"	\$ 11.99	<b>\$ 7.19</b>
24YASFS10	Flat 1"	\$ 13.05	<b>\$ 7.85</b>
24YASFS1	Round 1	\$ 4.35	<b>\$ 2.60</b>
24YASFS2	Round 2	\$ 4.98	<b>\$ 2.98</b>
24YASFS3	Round 3	\$ 5.75	<b>\$ 3.45</b>
24YASFS4	Round 4	\$ 6.95	<b>\$ 3.95</b>
24YASFS5	Round 5	\$ 7.59	<b>\$ 4.55</b>

## Holbein Watercolour



108-color range of moist transparent watercolor of unsurpassed purity, permanence and brilliance in 15ml tubes. It is a color line with a consistent creamy texture that remains smooth when dry without cracking, crumbling, chipping or molding in the palette.

[11HOLW..](#)

**Save 40% Off Retail**

Starting at \$13.20

## Holbein Artists' Gouache



Available 89 brilliant opaque colors in 15ml tubes. (White is also available in larger tubes.)

Holbein Artists' Gouache is more finely ground than other competing products. No whitening agents are added to Holbein Artists' Gouache to increase opacity.

Holbein Artists' Gouache will always give consistent reliable results without "milking out", darkening or muddiness.

Starting at \$13.50 and up  
[1HOLG...](#) **Sale Price \$8.10 and up.**

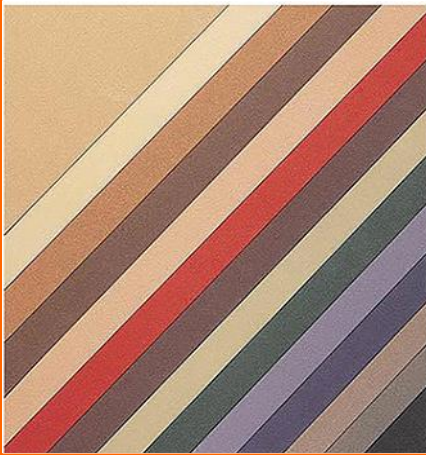
## Michael Harding Artist Watercolour



Artists know and appreciate Michael Harding oil paints for their high pigment load, and now watercolourists everywhere will benefit from the unprecedented proportions of pigment in his watercolours. After forty years making paint and receiving countless requests, Michael Harding takes great pride in launching a range of 136 finely ground watercolours. These watercolours will amaze with their colour strength, vibrance, clarity, and longevity!

[1MIC...](#) **Save 40% Off Retail**

## Sennelier La Carte Pastel Card Sheet



Professional acid-free and lightfast pastel board specifically designed for pastelists. A finely ground mixture of cork and vegetable flakes is applied to the surface of a 200 lb. card, offering a perfectly soft, uniform surface with a tooth that grabs and holds even the softest pastels. Unsurpassed performance for pastel, charcoal or pencil drawings. Sheets are 19.5" x 25.5".

[57LAC....](#)

Reg. \$33.05 | **Sale \$19.95/ea.**

## Strathmore Charcoal Tapebound Pad



Strathmore's 300 series charcoal paper has a traditional laid finish which is an ideal foundation for charcoal and pastel. The strong hard surface is also suitable for oil pastel and crayon.

64 lb. (95 g/m<sup>2</sup>)

(95 g/m<sup>2</sup>). 9" X 12" 32 Sheet

[56STR330109](#)

Reg. \$12.75 | **Sale \$6.35/pd.**

## Cromia Pastel Paper



Fabrizio Cromia paper is a long-life, acid-free paper ideal for pastel, pencil and charcoal drawing. Made of 50% cotton and 50% alpha-cellulose, these sheets have a soft feel and great tooth on both sides. Each sheet also has wet strength, making it suitable for light water media and mixed techniques. Offering the best possible lightfastness, these sheets are made using no optical brighteners. Each sheet features two deckle edges, measures 19.6" x 25.5", and weighs 220gsm.

[57FABFR9100...](#) Reg. \$11.45 | **Sale \$5.95/ea.**

## Viviva Colorsheets W/C



Viviva Colorsheets are probably the most compact and vibrant watercolors in the world. Designed as a thin booklet to fit in your pocket, they are super pigmented and last about as long as a half pan set.

[11VIV....](#)

**40% Off Retail**

## Viviva Easy Shetckbook



The Viviva Easy Sketchbook includes one A5 (5.8" x 8.3") wired sketchbook and one sketching mirror. to easily enable professional tracing solutions without the need of additional components.

**40% Off Retail**

[56VIVV276012](#)

## Williamsburg Oil



Williamsburg pigments are ground in pure, premium, alkali-refined and PH- balanced linseed oil. All the materials are hand measured, and every ounce of paint is scrutinized. The paint is packed in 37 ml and 150 ml non-reactive aluminum tubes.

[10WIL...](#) **Save 40% Off Retail**

## Winsor Newton Artist Oil



Every Winsor & Newton Artists' Oil Colour is individually formulated to enhance each pigment's natural characteristics and ensure stability of colour. By exercising maximum quality control throughout all stages of manufacture, selecting the most suitable drying oils and method of pigment dispersion, the unique individual properties of each colour are preserved. Combined with over 170 years of manufacturing and quality control expertise, the formulation of Artist's Oil Colour ensures the best raw materials are made into the World's Finest Colours.

[10WIN12...](#) **Save 40% Off Retail**

## Maimeri Puro Oil



Superior oil colors: What is pure, sincere, not mixed with other foreign substances that change its characteristics or diminish its merits. More pigment oil and that's it. Simple. No change, only a minimal amount of additives to improve rheological qualities. Elaborate for achieving an excellent color result. Color by color, individually calibrated, tested. 83 colors in perfect balance.

[10MAI001...](#)  
**Save 50% Off Retail**

## Holbein Oil



Holbein ranks as one of the world's finest lines of professional oil colors. The formulation of each color is modified individually to compensate for the inherent differences in the working characteristics of pigments. The result is an even consistency across the entire palette of color.

[10HOL...](#) **Save 40% Off Retail**

## Gamblin Oil Paint



Since our founding, Gamblin Artists Colors has handcrafted luscious oil colors and contemporary mediums true to the working properties of traditional materials. We believe every painting deserves to stand the test of time and are proud to provide artists with safer, more permanent oil painting materials.

[10GAM...](#) **Save 40% Off Retail**

## Cobra Water Mixable Oil



Cobra Water Mixable oil Color is a true professional grade oil color which is specifically formulated to be thinned, mixed and cleaned with water instead of solvents. Perfect for those who don't like to work with harmful solvents, or don't have a ventilated studio. Available in 40ml, 150ml and a full range of mediums. A rich palette of 70 colors, 32 mono pigmented colors and 10 colors based on highly exclusive pigments such as cadmium, cobalt and chromium oxide. [10COB....](#) **Save 40% Off Retail**

## Michael Harding Oil



Michael Harding Oil paints are made by hand, using techniques which date back to the days of the Old Masters. Your colours will be stronger and richer, and you will find the texture of the paint incomparable. You will love working with them.

[10MICMHD...](#) **Save 40% Off Retail** Starting at \$14.16

## Winsor Newton Griffin Alkyd Fast Drying Oil Paint



Griffin Fast Drying Oil Colour offers the excellent advantage of faster drying times compared to traditional oil colours. This means that the traditional oil techniques of both impasto and glazing can be done in considerably less time and a painting can be completed in a single session. The full range of 50 colours are ideal for working outdoors, and greater transparency means increased depth and clarity for glazes.

[10WIN19....](#) **Save 40% Off Retail**

## Art Spectrum Oil Prime



Art Spectrum® Oil Prime is a unique and complex formula containing an oil and resin blend combined with Titanium Dioxide. Non Yellowing, permanent adhesion .

Provides controlled absorbency, which maintains the natural glow of oil paint. The oil content allows it to harden very gradually, in pace with the oil paints minimizing stress cracking. Thins and cleans with water.

[17ARTOP5](#) 500 ml. Reg. \$ 54.50 | **Sale \$ 34.50**

[17ARTOP1](#) 1 Liter Reg. \$ 100.75 | **Sale \$ 59.95**

## Yasutomo Quad Point Pen



Y&C® QuadPoint Twist Pens are the newest reimagination of our classic QuadPoint Pens. Each pen comes with four different writing tips: 0.7 mm (fine point) ball point pen tips in black, red, and blue; and a 0.5 mm mechanical pencil. All four are refillable. 360° rotation lets you switch between writing functions with a smooth single-handed twist. Includes PVC-free eraser in cap. TP30BR features a glossy brown marbled finish with gold accents. Each pen comes gift boxed.

Made in Japan.

[42YASTP30...](#)

Reg. \$71.05 | **Sale \$42.65**

## Holbein Soft Tape



Holbein's single sided 'soft' tape is a low-tac, easy release, moisture resistant and semi-transparent masking tape for almost any temporary application. Removal will leave no trace of adhesive.

18 meter rolls available in 12mm, 20mm, 30 mm, and 40 mm wide.

[58HOLMT...](#)

**Save 40% Off Retail**

## Yasutomo Niji Premier Waterbrush



Thanks to its unique plunger system, Niji® Premier Waterbrushes are easier to fill and create less mess than other squeeze waterbrushes.

Each brush comes with a plastic cap. Packaged in a sturdy, reusable plastic carrying case for safe storage and convenient travel. Available in sizes small, Medium, Flat. Large 9 mm, Mini 12 mm, 15 mm, 1 mm, 12 mm Flat.

[24YASKWBP](#)

Single Retail \$15.95 | **Sale \$9.95/ea**

Set of 3 [24YASKWBPSET](#)

Retail \$46.39 | **Sale \$28.95/ea**



## Angelus Glitterlites



Glitz without the glue! This shiny, flexible glitter paint can be applied straight out of the bottle to give surfaces a glittery finish. It is great for shoes, handbags, belts, boots, accessories and more. It can be applied in a thin coat for a more subtle shine, or thicker for a more glittery appearance. When the white sugar color is mixed with any Angelus Leather Acrylic Paint color it will create a pastel effect. Ideal for proms, weddings, parties and crafts. In 1 oz. bottles.

[12ANGAG7300...](#) **Save 20% off Retail**



## W&N Pro Acrylics



Artists' Acrylic is our finest quality acrylic range and represents a breakthrough in acrylic colour technology. By combining our world-beating colour making experience with the latest developments in resin technology we have taken 'brilliance' to a new level.

[12WIN232...](#)  
**Save 40% Off Retail**

## Flashe Matte Artist's Vinyl-Based



Flashe is an extra fine, vinyl-based professional grade of matte permanent colors. It offers optical characteristics similar to gouache, old tempera paints and primitive painting grounds - the result is matte, velvety and opaque.

Extremely highly pigmented, Flashe may be diluted with water to create a range of possible techniques - from dense, highly opaque application to transparent water-color effects. Ideal for fresco and wall painting, faux finish, theater decoration, etc Good adherence and resistance to weather aggression. A little goes a long way.

[12LEF...](#) **Save 40% Off Retail**

## Golden Acrylics & Mediums



The GOLDEN acrylic system is unique in the ways in which the materials can be used in concert and in combination, making blending and application opportunities endless.

[12GOL...](#) & [17GOL...](#) **Save 40% Off Retail**

## Interactive Acrylics



Interactive changes the painting process, giving you plenty of time to blend and rework and giving you more creative freedom. 75 colours are intense without a plastic look or feel. Paint has a smooth, buttery consistency that dries satin. [12INT...](#) **Save 40% Off Retail**

## Holbein Acrylic Ink



Holbein Acrylic Ink is a low viscosity Artist Acrylic offering 60 highly detailed colors which deliver exceptional brilliance & clarity and are produced using lightfast pigments.

[12HOLHBAI...](#) **Save 50% Off Retail**

## Pebeo Mat Pub



29 colours in three price groups. 140 ml pots (29 colours) Ready-to-use water-based highly-pigmented matt acrylic paint with no cadmium pigments, covering, in colours that can be mixed together and that have excellent lightfastness (excluding fluorescent colours). Lightfastness: very good adhesion and outdoor resistance. It is permanent after drying, and the film is strong and flexible to deformation, which means it can be used on most surfaces Finish: velvet matt appearance. Thinner: water, but this results in a loss of consistency. Capacity: for 140 ml, from 1 m<sup>2</sup> to 1.25 m<sup>2</sup>. depending on the colours. Drying: away from dust, from a few minutes to 1 hour depending on the thickness applied. Cleaning the tools: using water before drying, with universal paint stripper after drying.

**Save 40 % Off Retail**

[12PEB169...](#)

## Talens Amsterdam Acrylic Ink



Amsterdam Acrylic Ink is available in 46 brilliant colors! All colors are highly pigmented ink and are extremely lightfast. The ink is based on an acrylic resin and is waterproof when dry. Ideal for a wide range of techniques like calligraphy, watercolor, airbrush and can be used with technical pens.

[12TAL1720...](#) Reg. \$13.39 and up **Sale \$7.99 and up**

## Liquitex Paint Markers



Professional Level Paint Spectrum: 50 Colors Properties: Highly Pigmented, Water-based Acrylic Finish: Satin. Nibs: 2mm chisel nib (line width 2-4mm) and 15mm nib (line width 8-15mm). Replacement nibs are available Introducing Liquitex Professional Paint Markers, an outstanding range of professional water-based acrylic markers for artists. Lightfast and permanent, Liquitex Professional Paint Markers offer the widest selection of brilliant colors and a choice of sizes with precision nibs for ultimate control. • 50 vibrant colors • Water-based acrylic • Lightfast, permanent and durable • Professional quality • Matches Liquitex color spectrum • Precision nibs • Versatile; for use on a wide range of surfaces uses and techniques • Inter-mixing with acrylics • Fine-detail • Outdoor and Indoor murals • Sketching • Mixed Media

[21LIQ....](#) **Save 40% Off Retail**

## Pebeo Studio Acrylics

Now Available in 100ml, 250ml,  
and 500ml



When it comes to dimensional work nothing beats studio High Viscosity acrylic paint, with its thick consistency and satin finish, it retains brush or spatula marks. Applied with a brush, it can be used for fine, regular lines, glaze effects and watercolour effects. It is guaranteed free of environmentally harmful heavy metals.

Partno	Size	Reg.	Sale
12PEB831..	100 ml Ser. 1	\$9.75	<b>\$5.85</b>
12PEB833..	100 ml Ser. 2	\$10.50	<b>\$6.30</b>
12PEB1690..	250 ml. Ser. 1	\$17.85	<b>\$10.70</b>
12PEB1693..	250 ml. Ser. 2	\$19.10	<b>\$11.45</b>
12PEB1710..	500 ml Ser. 1	\$33.50	<b>\$20.10</b>
12PEB1723..	500 ml Ser. 2	\$35.60	<b>\$21.35</b>

## Liquitex Heavy Acrylics



With a high concentration of lightfast artist-quality pigment and a satin finish, Liquitex Acrylic gives you rich, permanent color, with crisp brush strokes and knife marks.

[12LIQ1045...](#) Save 40% Off Retail

## Unison Soft Pastel Sets



Despite manufacturing over half a million individual sticks a year the pastels are still completely hand made and retain all the qualities of the originals. They are mixed to John's meticulous recipes and are based on traditional pigments such as cadmiums, cobalts and natural and synthetic earths. The difference in the manufacturing process, hand rolling rather than extrusion, gives Unison Colour Soft Pastels a unique texture, delivering a consistency of response across the colour spectrum that is unmatched and that is loved by artists.

[35UNIST....](#) Save 35% Off Retail

## PanPastel Sets



These are the first pastels that have the unique benefit of being inter-mixable, eliminating the need to invest in hundreds of colours for a complete pastel palette. Artists working in pastel can achieve a more painterly effect than ever before, including techniques for blocking in large areas of colour in seconds as well as applying ultra-thin glazing layers. All PanPastel professional-quality colours are highly pigmented and lightfast.

[35PAN...](#) Save 35% Off Retail

## Lamy Safari Fountain Pens

Sturdy plastic, multiple colours / ergonomic grip / steel nib, polished / with ink cartridge  
LAMY T 10 blue / can be used with the converter LAMY Z 28. \*\*converter sold separately.  
Many attractive colours, timeless design, perfect ergonomics. These are just some of the reasons that the LAMY Safari is one of the most popular writing instruments worldwide. Distinctive recessed grip guarantees writing comfort.



Aquamarine Mango

[18LAM.....](#)

Reg. \$42.00

**Sale \$33.95**

## Goldfaber Pencil Set



8-piece starter set for drawing, sketching and hatching. 6 Goldfaber graphite pencils (2H, HB, B, 2B, 4B, 6B) Break resistant lead due to secular bonding process (SV) Including sharpener and PVC-free eraser.

[32FAB114000](#)

Reg. \$13.25

**Sale \$9.99**

## Tote Board



These portable, multifunctional tote boards are great for both indoor or outdoor sketching and painting. Made of untempered 5mm MDF, they feature heavy duty clips, an easy-carry cutout handle and a heavy-duty rubber band to keep pad or paper in position.

[39AA17703](#) 1 Clip 13" X 17"

Reg. \$26.09 | **Sale \$15.95**

[39AA17705](#) 2 clip 23" X 26"

Reg. \$43.49 | **Sale \$21.95**

## Faber Castell Vinyl Eraser



7081 N eraser. The quality of an eraser and using the correct eraser are crucial for optimum results. Basically, two different materials plastic mixture guarantees soft and smear-free erasing. are used to make erasers: rubber and plastic.

[40FAB188121](#) Reg. \$1.55 | **Sale \$1.19/ea.**

## RGM Etching Press



This manual etching press is for chalcographic printing and features a steel structure with a lower drag knurled roller and smooth upper roller.

The galvanized iron tabletop is 3mm thick, with printing area of 10.5" x 16.5" and topped with 3mm thick felt. The table top in galvanized iron 3mm, print size 26.5 x 42 cm. Weight 16 kg [19RGPRESS2642](#)  
Reg. \$1051.00 | **Sale \$630.00**

## 13" Small Press Package



Contents 3 Pieces: Press 695202, Plate 695203, Cushion 695204 These pressed can be used for a variety of printmaking techniques, including relief, collagraph, engraving, etching and mono-printing. [19JAC695200](#)

Reg. \$3653.15

**Sale \$2190.00**

## 19" Medium Press Package



Includes the following: 695302 Medium Press, 695303 Phenolic Bed Plate, 695304 Cushion Blanket (gray), and 695305 Medium Press Stand. [19JAC695301](#)  
Reg. \$5583.00

**Sale \$3349.80**

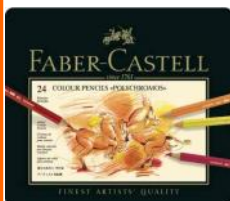
## 23" Large Press Package



Includes the following: 695402 Medium Press, 695403 Phenolic Bed Plate, 695404 Cushion Blanket (gray), and 695405 Medium Press Stand. [19JAC695401](#)  
Reg. \$9872.35

**Sale \$5923.40**

## Polychromos Pencil Sets



Polychromos artists' pencils are valued internationally by professionals and semi-professionals for their unsurpassed quality. The high quality standards of the Polychromos coloured pencils shine through, whether they are used for graphics or artistic free style. [31FAB1100...](#)

## 4Artist Oil Based Marker



The 4 Artist Marker is a oil paint marker and available 2mm, 4mm, 8mm and 15mm tip sizes.

These markers allow you to draw accurately on most surfaces. They are perfectly suited to work on canvas, paper, cardboard, wood, metal, plastic, glass, ceramic, porcelain, plaster, mineral material, etc. [21PEB580...](#) **Save 40% Off Retail**

## Goldfaber Pencil Set



8-piece starter set for drawing, sketching and hatching. 6 Goldfaber graphite pencils (2H, HB, B, 2B, 4B, 6B) Break resistant lead due to secular bonding process (SV) Including sharpener and PVC-free eraser

[32FAB114000](#)

Reg. \$13.25  
**Sale \$9.99**

Number	Set of	Reg.	Sale
31FAB110012	12	\$39.29	<b>\$28.95</b>
31FAB110024	24	\$78.55	<b>\$47.15</b>
31FAB110036	36	\$117.80	<b>\$69.95</b>
31FAB110060	60	\$196.35	<b>\$117.80</b>
31FAB110011	120	\$395.00	<b>\$199.00</b>

## Sennelier Extra Soft Pastel Sets



Sennelier's Extra-Soft Pastels were created over a period of three years at the turn of the 20th century and the result was the creation of one of the largest chromatic range of pastels. These pastels are comfortable to hold and allow for large areas to be covered with a lush, luxurious color. Each pastel is composed of high quality pure pigment and a natural transparent binder. For gradient shades, increasing amounts of mineral fines are added, ultimately tending towards white. The exceptional brightness is the result of the pigment and the natural mineral fines discovered by Sennelier in 1905 and that have been used ever since. The manufacturing process of the Sennelier cylindrical pastel does not compress the paste, and the pastel dries naturally in open air. Each stick measures 2-1/2" long and 1/2" in diameter.

[35SEN...](#) **40% Off Retail**

## Rembrandt Soft Pastels Sets



Pastels are a soft type of chalk based on kaolin (china clay) and pigment, with which drawings can be made in a style similar to painting. Artists who work with pastels tend to see their work as a painting rather than a drawing. In contrast to what the name suggests, the pastel range also contains very bright colours. World-wide most used soft pastels Characteristic softness for excellent colour release Very high colouring power and brilliant colour tones Manufactured with the purest pigments and finest quality kaolin.

[35TAL...](#) **40% Off Retail**

## Holbein Coloured Pencil Sets



150 Oil-based colours with exceptional lightfastness. Features a medium-hard 3.8 mm lead made with quality Pigment. Smooth and easy to draw with.

[31HOL...](#)

Number	Set Size	Retail	Sale
31HOL4490P90*	12	\$ 68.00	<b>\$47.60</b>
31HOL4490P920	24	\$135.00	<b>\$94.50</b>
31HOL4490P930	36	\$200.00	<b>\$130.00</b>
31HOL4490P93*	50	\$270.00	<b>\$189.00</b>
31HOL4490P940	100	\$550.00	<b>\$385.00</b>
31HOL4490P945	150	\$820.00	<b>\$569.00</b>
31HOL4490P946	150 Wood Box	\$1100.00	<b>\$659.00</b>

## Caran D'ache Luminance Sets



Smooth and permanent lead for artists and creative professionals. Lightfastness in compliance with the highest international standard: ASTM D-6901. Wide range of colours developed with a large variety of highly concentrated pigments. Permanent, water-fast-resistant leads lay down smooth. 3.8 mm Lead have high pigment concentration for bright intense colours. Highly recommended for mixing, blending, shading, burnishing (with or without use of white pencil) and gradations. Uniform colour with no blooming.

[31CAR69...](#) **Save 25% Off Retail**

## Derwent Pencil Sets



**Save 30%  
Off Retail**

**Derwent  
Pencil Sets**

## Strathmore Pads



**40% Off  
Retail  
on all  
Strathmore  
Pads**

**56STR...  
52STR...**

## Classic Santa Fe II Easel



This easel offers the same quality features as the Classic Santa Fe I with a few extras. Its marine style winch raises and lowers easily allowing for works weighing up to 300 lbs. The double-masted H-frame offers extra stability and will hold larger canvases than the Santa Fe I & III. Plastic front locking casters offer an ease of mobility. Included with this easel are step-by-step instructions and operating features.

Max canvas height: 106". Base width/depth: 24" x 30". Bottom painting tray: 30" x 7 1/2"

Lowest easel height: 78". Highest easel height: 129". Box dimensions: 77" x 30" x 10". Shipping weight: 98 lbs. Some assembly required.

**30JAC880350**

Reg. \$3179.85 | **Sale \$1695.00**

## Staedtler Double-ended Markers



Water color brush marker with two tips. Brush tip for variable strokes, contouring and shading. For illustration, detail work and professional marker renderings. Use the brush tip to color rubber stamps. For expressive lettering and calligraphy. Durable foam brush tip will not tear or fray. For use on photographic paper and film. Intense dye based ink mixes with water for beautiful watercolor effects. For salt glazing sprinkle iodized salt over wet markings.

**21STA3001TB18** Set of 18

Reg. \$17.55 | **Sale \$12.29**

**21STA3001TB36** Set of 36

Reg. \$35.10 | **Sale \$22.89**

## BEST Sitha Taboret- Easel & Cabinet



Ideal for pastel, oil and water media. Closed: 20-1/4"(w) x 20-1/2"(d) x 37"(h). Extended height (from floor to top of easel): 76". Extended width (with wings open): 48". Max. canvas height: 34". Attached fold-out easel can be adjusted to forward tilt. Drawers are on smooth, full-extension, metal bearing sliders for easy opening. Top drawer contains a 1/4" thick, 18" square melamine palette and a fold out holder for the supplied brush washer #411250 (at left). Third drawer is deep enough for storage of canvas trays from easel when the unit is closed. Mounted on front locking rubber casters. Packaged in heavy-duty carton. Shipping weight: 120 lbs. Box dimensions: 27" x 27" x 34".

**30JAC880019** Reg. \$3823.00 | **Sale \$2295.00**

## Best Elegant H-Frame Oak Easel



This oak easel features a winch and pulley system that allows the canvas to be raised and lowered with ease. It includes two small stainless steel cups and a storage drawer to hold a variety of supplies.

Maximum canvas height: 82". Base width/depth: 24" x 24". Maximum easel height: 129". Minimum easel height: 63". Bottom canvas tray width: 28". Top canvas tray width: 24". Angled storage drawer: 17-3/4" wide x 4-1/4" deep. Includes front-locking plastic casters. Shipping weight: 83 lbs.. Box dimensions: 78" x 30" x 10". This easel is suitable for: oil and acrylic.

[30JAC880065](#)

Reg. \$2107.59 | **Sale \$1264.00**

## Lyptus Deluxe Table Easel



Maximum canvas height: 40" Base width/depth: 18" x 18 1/4" Compact easel height: 27 1/4" Extended easel height: 48 3/4" Box dimensions: 28" x 19" x 5" Shipping weight: 11 lb

[30JAC844200](#)

Reg. \$406.75 | **Sale \$229.00**

## Studio Tabletop Easel

Sturdy table easel styled after the H frame studio easel. Made of sustainable and renewable bamboo. Base: 11" W x 12.5" D. Extended height: 30". Maximum canvas height: 22". Actual weight: 2.5 lbs. Minimal assembly required. Individually boxed.

[30AA13415](#)

Reg. \$101.15

**Sale \$49.95**



## Rover Black Aluminum Table Easel



Lightweight aluminum easel featuring adjustable wings which support large canvas, wing span holds up to 18" x 24" canvas. Folds up and stores in travel bag for easy transport. Weight: 1.5 lbs.

[30PKETA15B](#)

Reg. \$37.15 | **Sale \$16.95**

## Best Ultimate Oak Easel



The Ultimate Easel has front locking casters, holds a maximum. canvas height 108", base 24" X 30".

Compact easel height 78", extended easel height 130". The middle painting tray 22" and bottom painting tray 26".

Weight 52 lbs.

[30JAC880000](#)

Reg. \$1190.00

**Sale \$875.00**

## Lyptus Wood Dulce Easel

With its H-frame construction and laminated quad base, this easel offers great stability for working seated or standing. A slide and lock system adjusts the height.

•Maximum Canvas Height 84"

•Base Width/Depth: 21" x 24"

•Compact Easel Height: 58"

•Extended Easel Height: 95"

•Box Dimensions: 61" x 21" x 6"

•Shipping Weight: 25 lbs.

over size carton

•Little assembly required

[30JAC840200](#)

Reg. \$665.00

**Sale \$279.00**





## Sienna All in One Pochade Box



As the name implies, the Sienna all in one pochade box is designed to carry all the essentials for a day of plein air painting. The all in one pochade box has all the features of the regular Sienna pochade boxes, with some exciting new features as well. The all in one pochade box also includes a paper towel holder, which can be hung on the front edge of the box to hold a standard roll of paper towels. Closed Dimensions: 14 3/4 x 11 1/4 x 5 1/2 Storage compartments measures 3 1/4" x 12 1/4" Net Weight: 6.8 lbs Max canvas size: 17" tall x any width The all in one box has a palette area of 10" x 12" and a maximum canvas height of 17". [30SIECTPB1014](#)

Reg. \$473.00 | **Sale \$310.00**

## Sienna Large Pochade Box



Closed: 14 3/4 x 11 1/4 x 2 3/4, Net Weight: 5.0 lbs, Max canvas size: 17", The L box has a glass palette area of 10x12 and a maximum canvas height of 17 The M box has a palette area of 9x10 and a maximum canvas height of 15. The Sienna plein air pochade boxes are designed with ease of use, durability, and versatility in mind. Our pochade box is essentially an easel and a palette in one.

[30SIECTB1012](#)

Reg. \$362.35 | **Sale \$253.65**

## Sienna Medium Pochade Box



The Sienna Pochade Medium Box is Closed: 12 3/4 x 10 1/4 x 2 3/4, Net Weight: 4.4 lbs. Max canvas size: 15, The M box has a palette area of 9x10 and a maximum canvas height of 15. The Sienna plein air pochade boxes are designed with ease of use, durability, and versatility in mind. Our pochade box is essentially an easel and a palette in one. Both canvas panels and stretched canvas can be held in the adjustable canvas holders. The lid of the pochade box is held firmly in place at any angle thanks to the lid adjustment arm.

[30SIECTPB0910](#)

Reg. \$325.00 | **Sale \$227.50**

## Silver Black Velvet Brushes



These distinctive black lacquer handled brushes with a signature silver band are a water-based artist's dream! The Black Velvet® series is made with a blend of natural squirrel hair and black synthetics that allows the brush to hold a huge amount of color and release it with perfect control for watercolors, gouache, fluid acrylics, inks and dyes. The bristles are simultaneously soft enough to allow multiple-layer glazing without disturbing previous colors, yet firm enough to lift color with a gentle scrub.

[24SIL30...](#)

**Save 50% Off Retail**

## Chelveston Hog Bristle

[24JAC902...](#)



Using an interlocked bristle, great attention is given to forming the brush heads. The flagging is excellent and the head shapes are designed to give the maximum life to the brush. The ferrules are a beautiful, highly polished copper nickel and the handles have excellent balance and are designed to reduce fatigue. (Limited Quantity)

Number	Description	Retail	Sale
24JAC902610	Filbert 10	\$ 27.39	<b>\$ 13.69</b>
24JAC902612	Filbert 12	\$ 37.50	<b>\$ 18.75</b>
24JAC902712	Bright 12	\$ 37.50	<b>\$ 18.75</b>

## Prestige Grey Soft-Side Portfolio



Prestige Student-Series soft-sided portfolio is an economical briefcase constructed of high quality, water-resistant nylon. Lightweight with double-stitched seams for added strength, 1/2" gusset, and zippered closure at top. Gray with carrying handle.

[20PRENG2026](#) Reg. \$29.95 | **Sale \$7.95**

## Prestige Rugged Portfolio



These durable portfolios are constructed with black polyester and an ethylene-vinyl acetate shell to keep their shape. Features include a clear zippered pouch, a large mesh pocket, elastic cross straps and zippered enclosure for securing contents. The Rugged Pro has easy carry handles and rubber feet to protect it from wear. 1 1/2" gusset.

[20ALVEVA1722](#) 17" X 22" Reg. \$120.75 | **Sale \$19.95**

[20ALVEVA2026](#) 20" X 26" Reg. \$145.00 | **Sale \$29.95**

## Prestige Rugged Pro Portfolio



This deluxe portfolio is beautifully crafted as well as durable and functional. Constructed with black polyester and ethylene-vinyl acetate shell to keep it shape. a hard plastic frame provides added

strength to protect any enclosed artwork or personal items. this portfolio's feature a clear zipper pouch. Designed with travel in mind, each portfolio has adjustable shoulder straps, and comfort grip easy carry handles, and rubber feet to protect it from wear. 2 3/4" gusset.

[20ALVEVM1722](#) 17" X 22"

Reg. \$157.50 | **Sale 24.95**

[20ALVEVM2026](#) 20" X 26"

Reg. \$199.50 | **Sale \$29.95**

## Alvin Presentation Refills



Archival quality, acid-free polypropylene material with acid-free black paper inserts. Universal holes allow use in all presentation cases. RF11 also fits standard 3-ring binders. Holes located along long edge.

[20ALVRF...](#)

Number	Size	Retail	Sale
20ALVRF11	8.5"X11"	\$42.05	<b>\$7.49</b>
20ALVRF14	11"X14"	\$49.30	<b>\$7.95</b>
20ALVRF17	14"X17"	\$36.05	<b>\$7.95</b>
20ALVRF22	17"X22"	\$52.55	<b>\$7.95</b>

## Ice Plastic Mailing and Storage Tubes



[20ALVMT18](#) 18"

Reg. \$19.95 | **Sale \$4.95/ea.**

[20ALVMT...](#) 25"

Reg. \$23.95 | **Sale \$5.95/ea.**

## Set of 4 French Curves



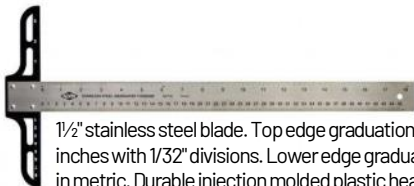
Popular curves molded of smoke gray-tinted 0.08" thick polystyrene with double inking edges. Packaged in protective vinyl case.

[06ALVFC44](#)

Reg. \$ 26.05

**Sale \$9.95/ea.**

## Stainless Steel T-Square 30"



1½" stainless steel blade. Top edge graduations in inches with 1/32" divisions. Lower edge graduations in metric. Durable injection molded plastic head with inch and metric graduations.

[06ALVAST30](#) Reg. \$54.60 | **Sale \$14.95**

## Alvin Pencil Case



Extra large case for storing pencils, 6" rulers, markers, pens, and more. This large size pencil case of 7¾" x 4" x 1½".

[20ALVAPXL](#)

Reg. \$4.49

**Sale \$1.39**

## Octopus Ink & Sheen Ink



Drawing ink or fountain pen ink? Why not both? Octopus has reformulated the classic drawing ink so that you no longer have to choose!

Finest pigments give the 38 water-proof colours their intense luminosity and have been processed into a unique waterproof and lightfast formula, which is noticeable in the pleasant writing properties of the ink. The Write &

Draw drawing inks fulfil the requirements for document-proof inks and are made exclusively from vegan ingredients. Grab your pen, your nib, your brush... whether it's calligraphy, handlettering, sketching... With our multi-functional drawing ink, nothing can stop your creativity!

[18OCT...](#)

Reg. \$22.00 | **Sale \$16.00/ea.**



## Unison Hand



We've created a beautiful hand-crafted colour chart 2024 to represent the full range of Unison Colour's 380 pastels.

[35UNIUCHANDC](#)

Reg. \$170.98

**Sale \$129.95**

## Iwata Recharg. Electric Eraser



This electric eraser is gentle on soft materials like sketching paper, yet powerful enough to create stunning contrasts. It comes with both small and large eraser sizes allowing for precision highlights and controlled contours. And guess what? Since it's USB rechargeable, there's no more batteries to buy! Try our USB Rechargeable Electric Eraser and open new dimensions of creativity.

[40IWAMUE...](#)

Reg. \$33.00 | **Sale \$19.95**

## Daniel Smith 266 Dot Card + 22 Gouache



Take the ultimate color journey with Watercolor Dot Cards a wonderful resource for building your personal color palette. Each dot of paint lists the name and pigment properties so you can explore new shades. They're perfectly portable for travel journaling, too. Dab the dot with a wet brush and watch the color flow.

266 Watercolor + 22 Gouache Dot Cards

An opportunity to try all 266 DANIEL SMITH Watercolors (including PrimaTek and Luminescent) plus our 22 Gouache colors, contained on five sheets of watercolor paper. [11DAN1900485](#) Reg. \$48.85 | **Sale \$32.95**

## Liquitex Canvas 3/pk Packs



These packs include three cotton canvasses, each triple-primed and suitable for acrylics and oils. They feature a primed weight of 9.9 oz., are acid-free and archival and back-stapled so the edges can also be painted. The

stretcher bars are made from pine wood from FSC compliant forests.

[54LIQ...](#)

Number	Size	Reg.	Sale
472011014	11"X 14"	\$34.49	<b>\$17.95</b>
472012016	12"X16"	\$36.95	<b>\$18.49</b>
472016020	16"X20"	\$50.75	<b>\$25.39</b>
472018024	18"X24"	\$62.35	<b>\$31.19</b>

## ProArt 11 Piece Drawing Kit



All in one drawing set value pack includes One 4-1/2" manikin, 3 graphite pencils (soft, medium, hard), 3 thick sketch pencils (soft, medium, hard), aluminum pencil sharpener, plastic eraser, blending stump and sand paper pointer. [39PRO3049VP](#)  
Reg. \$25.60 | **Sale \$15.95**

## Winsor Newton Brushes

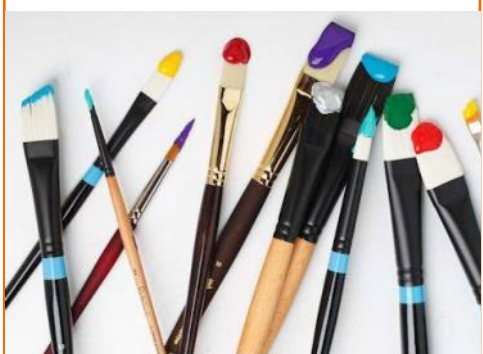


All Winsor & Newton Brushes

[24WIN....](#)

**50% Off Retail**

## Princeton Brushes



All Princeton Brushes

[24PRI....](#)

[SNAP Brushes, Simply Simmons](#)

**50% Off Retail**

## Conditions

- Sale prices are good until November 17, 2024 or while quantities last.
- Prices, products, and conditions may change without notice.
- Sorry, some items are excluded from our rain check policy.
- Shipping policy is F.O.B. Edmonton. (See web page for shipping).
- We accept Visa, MasterCard, Cash, Interac, or authorized account.
- We accept Fax, Mail, E-mail, or Phone orders, or shop in person.
- Shop on the Website ([www.deltaart.ca](http://www.deltaart.ca)).



## Address

1116-120 Street,  
Edmonton AB, T5G 2X8  
780.455.7983 (phone)  
1.888.455.1606 (toll free)  
[www.deltaart.ca](http://www.deltaart.ca)  
Email: [deltaart@deltaart.ca](mailto:deltaart@deltaart.ca)

**Store Hours: Monday–Friday 9:30 am–6:00 pm | Saturday 9:30 am–5:00 pm**